



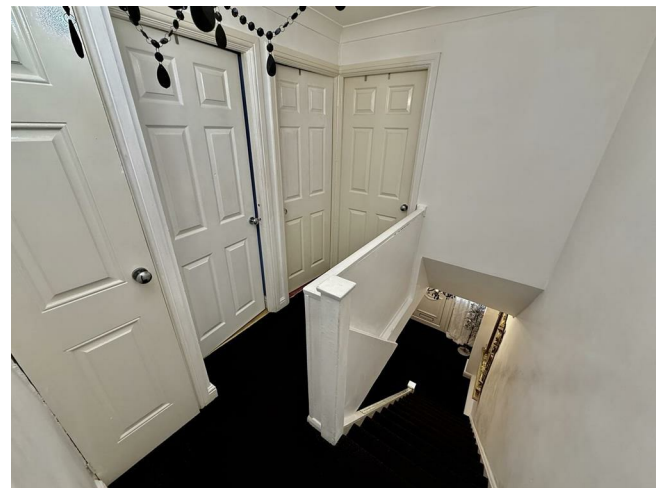
18 Thursby Gardens, Gateshead, Tyne & Wear, NE9 6NL

Asking Price £134,950



Key features

- TERRACED HOUSE
- THREE DOUBLE BEDROOMS
- OPEN PLAN LOUNGE DINING
- FITTED KITCHEN
- MODERN BATHROOM
- GAS CENTRAL HEATING
- UPVC DOUBLE GLAZING
- PEDESTRIAL FRONTAGE
- SOUTH FACING GARDEN
- VIEWING ADVISED



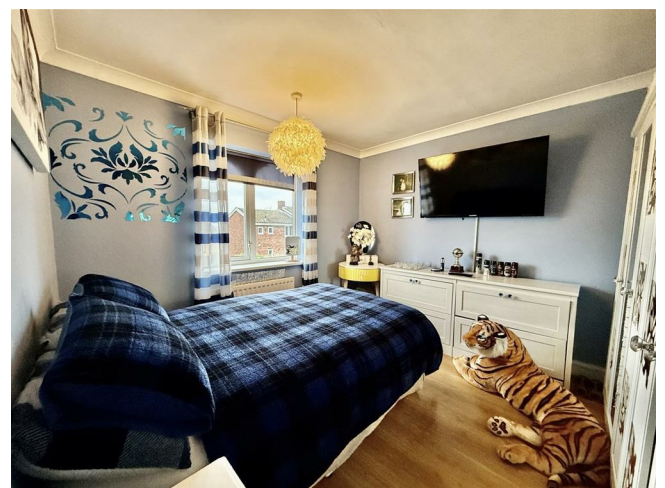
Description

Thursby Gardens, Gateshead, this delightful terraced house offers a perfect blend of comfort and style. With three well-proportioned bedrooms, this property is ideal for families or those seeking extra space. The open plan lounge and dining area creates a welcoming atmosphere, perfect for entertaining guests or enjoying quiet evenings at home.

One of the standout features of this home is its pedestrian frontage, which adds to the appeal of the property and enhances the sense of community in the area.

The single bathroom is conveniently located, ensuring ease of access for all residents. This property presents a wonderful opportunity for anyone looking to settle in a vibrant neighbourhood with a strong sense of community.

In summary, this terraced house in Thursby Gardens is a fantastic choice for those seeking a comfortable and inviting home with ample space and lovely views. Don't miss the chance to make this charming property your own.



ENTANCE HALL

13'10 x 6

LOUNGE

13'3 x 11'9

DINING

9'7 x 11

KITCHEN

9'11 x 9'7

STAIRWAY/LANDING

BEDROOM ONE

11'11 x 11'11

BEDROOM TWO

11'10 x 10'5

BEDROOM THREE

8'9 x 7'7







BATHROOM

EXTERNAL

DISCLAIMER SALES

The particulars on these properties are set out as a general guidance for intended purchasers or tenants, and do not constitute part of an offer or contract. The Agent has not tested any apparatus, equipment, fixtures and fittings or services and so cannot verify that they are in working order or fit for the purpose. A Buyer is advised to obtain verification from their Solicitor or Surveyor. References to the Tenure of a Property are based on information supplied by the Seller. The Agent has not had sight of the title documents. A Buyer is advised to obtain verification from their Solicitor. All dimensions, descriptions and distances, reference to condition and necessary permissions for use and occupation, and other details are given without responsibility. Any intending purchasers or tenants should not rely on them as statements of fact, but must satisfy themselves by inspection or otherwise as to the correctness of each of them. Items shown in photographs are NOT included unless specifically mentioned within the sales particulars. They may however be available by separate negotiation. Measurements have been taken using a laser distance meter and may be subject to a margin of error. For further information see the Consumer Protection from Unfair Trading Regulations.

Thursby Gardens



Ground Floor

First Floor

Total Area: 77.3 m² ... 832 ft²

All measurements are approximate and for display purposes only

Energy Efficiency Rating

	Current	Potential
<i>Very energy efficient - lower running costs</i>		
(92 plus) A		
(81-91) B		
(69-80) C	74	85
(55-68) D		
(39-54) E		
(21-38) F		
(1-20) G		
<i>Not energy efficient - higher running costs</i>		
England & Wales	EU Directive 2002/91/EC	

Environmental Impact (CO₂) Rating

	Current	Potential
<i>Very environmentally friendly - lower CO₂ emissions</i>		
(92 plus) A		
(81-91) B		
(69-80) C		
(55-68) D		
(39-54) E		
(21-38) F		
(1-20) G		
<i>Not environmentally friendly - higher CO₂ emissions</i>		
England & Wales	EU Directive 2002/91/EC	

212 High Street
Gateshead
Tyne And Wear
NE8 1AQ
0191 500 8 500
info@carouselestateagents.com
<https://www.carouselestateagents.com>

